

Eagle 60

260-280 Watt

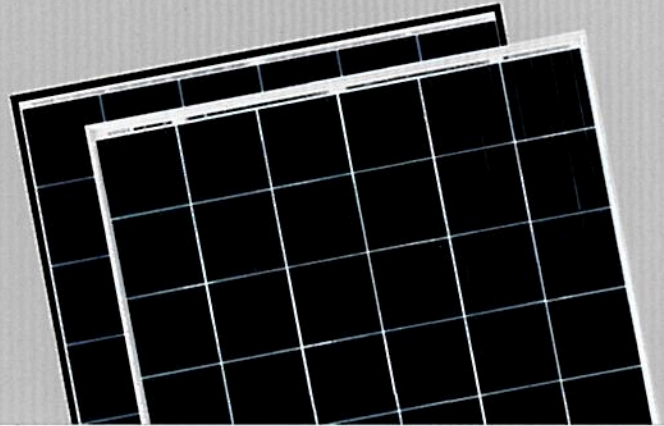
POLY CRYSTALLINE MODULE

Positive power tolerance of 0~+3%

ISO9001:2008, ISO14001:2004, OHSAS18001 certified factory.
IEC61215, IEC61730 certified products.



(4BB)



KEY FEATURES



4 Busbar Solar Cell:

4 busbar solar cell adopts new technology to improve the efficiency of modules, offers a better aesthetic appearance, making it perfect for rooftop installation.



High Power Output:

Polycrystalline 60-cell module achieves a power output up to 280Wp.



PID RESISTANT:

Limited power degradation of Eagle module caused by PID effect is guaranteed under strict testing condition (85°C/85%RH, 96 hours) for mass production.



Low-light Performance:

Advanced glass and surface texturing allow for excellent performance in low-light environments.



Severe Weather Resilience:

Certified to withstand: wind load (2400 Pascal) and snow load (5400 Pascal).



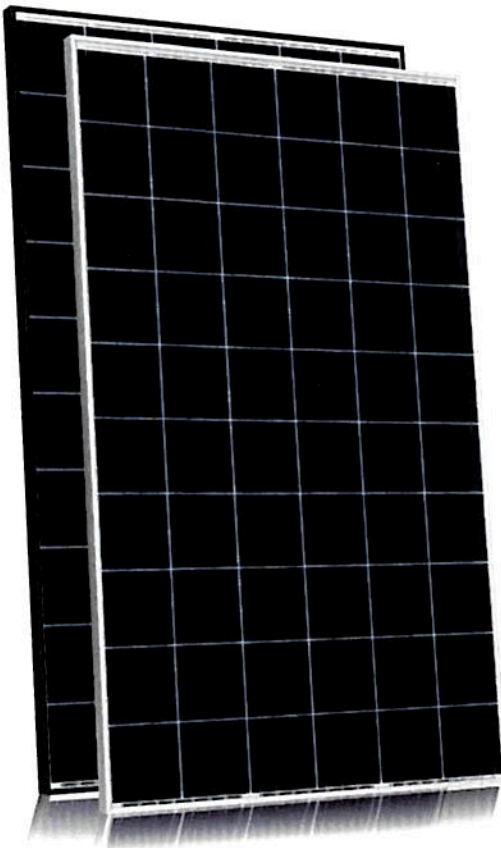
Durability against extreme environmental conditions:

High salt mist and ammonia resistance certified by TUV NORD.



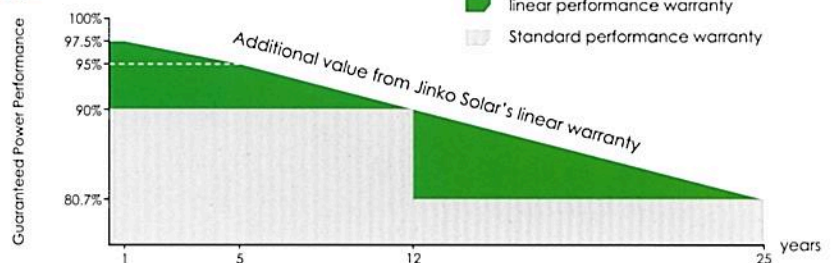
Temperature Coefficient:

Improved temperature coefficient decreases power loss during high temperatures.

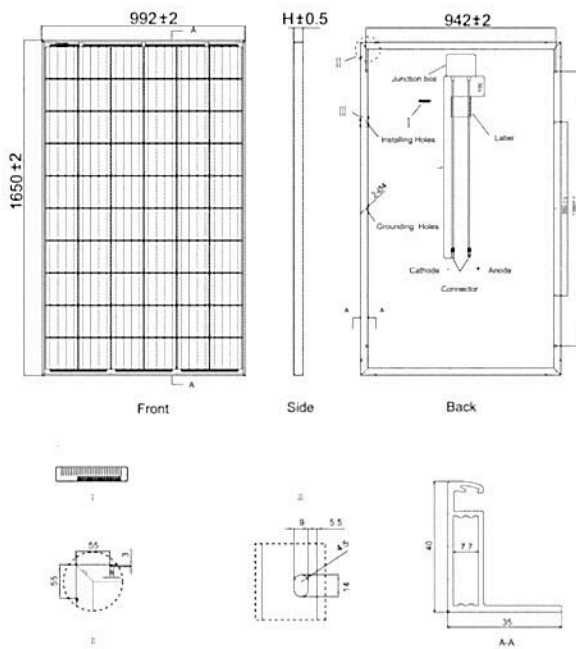


LINEAR PERFORMANCE WARRANTY

10 Year Product Warranty • 25 Year Linear Power Warranty



Engineering Drawings



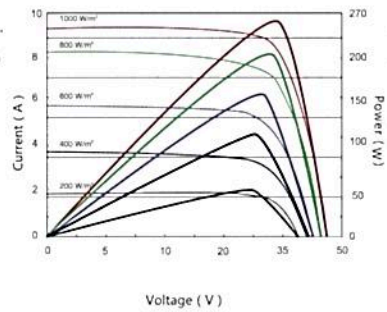
Packaging Configuration

(Two boxes=One pallet)

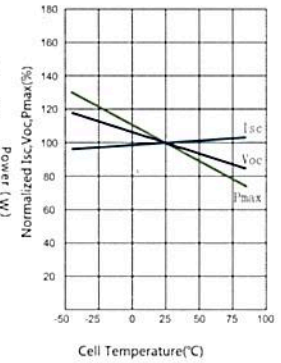
26pcs/box, 52pcs/pallet, 728 pcs/40'HQ Container

Electrical Performance & Temperature Dependence

Current-Voltage & Power-Voltage Curves (265W)



Temperature Dependence of Isc, Voc, Pmax



Mechanical Characteristics

Cell Type	Poly-crystalline	156×156mm (6 inch)
No. of cells	60 (6×10)	
Dimensions	1650×992×40mm (65.00×39.05×1.57 inch)	
Weight	19.0 kg (41.9 lbs)	
Front Glass	3.2mm, High Transmission, Low Iron, Tempered Glass	
Frame	Anodized Aluminium Alloy	
Junction Box	IP67 Rated	
Output Cables	TUV 1×4.0mm ² , Length: 900mm or Customized Length	

SPECIFICATIONS

Module Type	JKM260PP-60		JKM265PP-60		JKM270PP-60		JKM275PP-60		JKM280PP-60	
	STC	NOCT	STC	NOCT	STC	NOCT	STC	NOCT	STC	NOCT
Maximum Power (Pmax)	260Wp	194Wp	265Wp	198Wp	270Wp	202Wp	275Wp	205Wp	280Wp	209Wp
Maximum Power Voltage (Vmp)	31.1V	28.3V	31.4V	28.7V	31.7V	29.0V	32.0V	29.3V	32.3V	29.6V
Maximum Power Current (Imp)	8.37A	6.84A	8.44A	6.91A	8.52A	6.97A	8.61A	7.00A	8.69A	7.06A
Open-circuit Voltage (Voc)	38.1V	35.1V	38.6V	35.3V	38.8V	35.6V	39.1V	35.9V	39.4V	36.1V
Short-circuit Current (Isc)	8.98A	7.26A	9.03A	7.31A	9.09A	7.35A	9.15A	7.37A	9.20A	7.42A
Module Efficiency STC (%)	15.89%		16.19%		16.50%		16.80%		17.11%	
Operating Temperature(°C)	-40°C~+85°C									
Maximum system voltage	1000VDC (IEC)									
Maximum series fuse rating	15A									
Power tolerance	0~+3%									
Temperature coefficients of Pmax	-0.40%/°C									
Temperature coefficients of Voc	-0.30%/°C									
Temperature coefficients of Isc	0.06%/°C									
Nominal operating cell temperature (NOCT)	45±2°C									

*STC: Irradiance 1000W/m² Cell Temperature 25°C AM=1.5

NOCT: Irradiance 800W/m² Ambient Temperature 20°C AM=1.5 Wind Speed 1m/s

* Power measurement tolerance: ± 3%